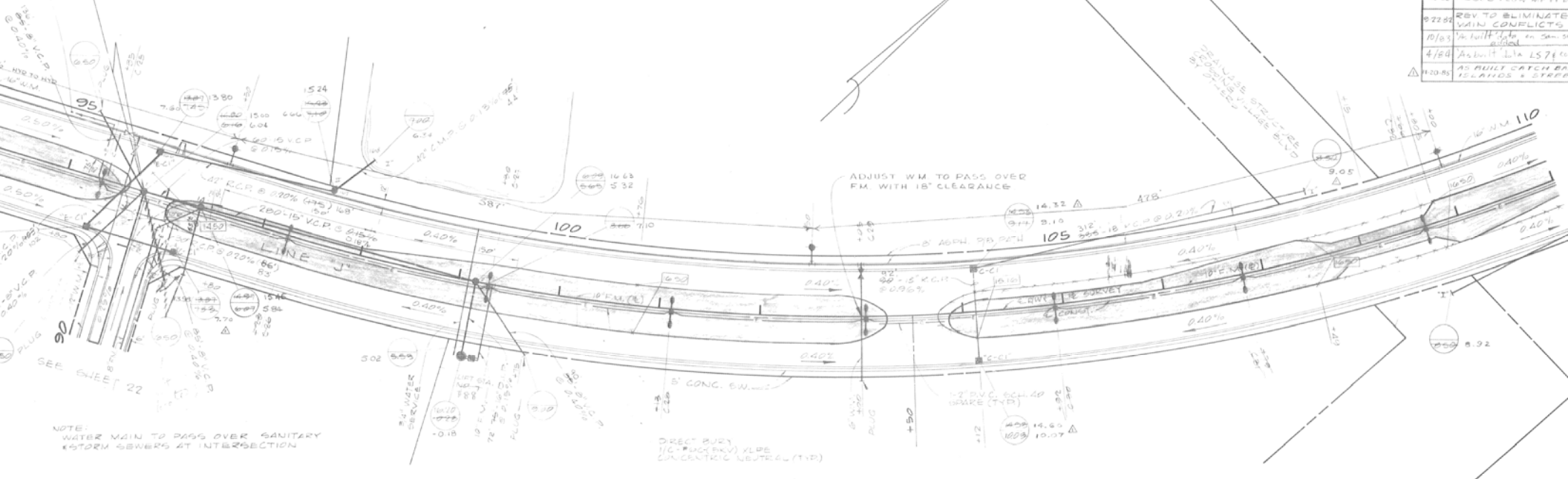


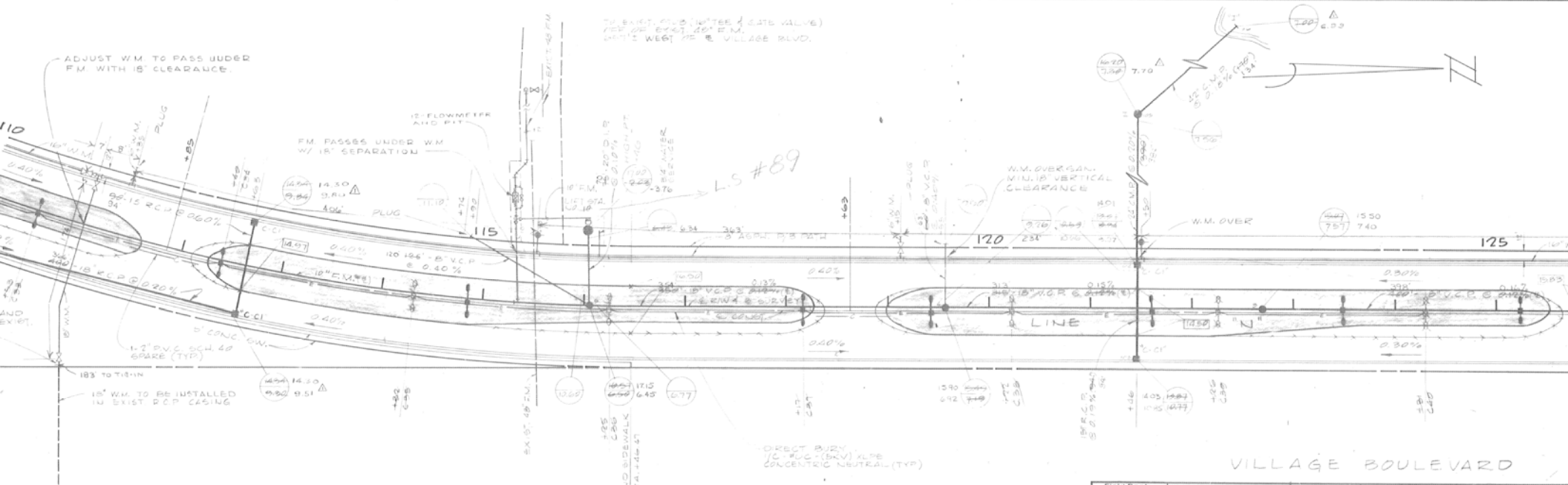
Revision	
Date	Description
9/28/81	REV. AS PER PERM
12/2/81	REV. PVT. GRADES FOR BRIDGE APP
12/22/81	ACCORD PLAN, REFE
2/22/82	REV TO ELIMINATE MAIN CONFLICTS
10/8/82	1/4" HORIZ. SCALE TO 200' V. SCALE TO 10'
4/8/83	AS BUILT DATA 15710
7/20/85	AS BUILT CATCH BASINS & STREETS

STA. 95+76.29 @ VILLAGE BLVD.
STA. 91+56.27 @ BRANDYWINE ROAD



NOTE:
WATER MAIN TO PASS OVER SANITARY STORM SEWERS AT INTERSECTION

ADJUST WM TO PASS OVER FM WITH 18' CLEARANCE



ADJUST WM TO PASS UNDER FM WITH 18' CLEARANCE

TO EXIST. 12\"/>

VILLAGE BOULEVARD

Field Book No.	ROBERT E. OWEN & ASSOCIATES, INC.	WESTWARD EXPANSION PROJECT VILLAGES OF PALM BEACH LAKES PLAT NO. 2 FOR THE CITY OF WEST PALM BEACH, FL. PERM. L. 410. CO. ROADWAY PLAN
Design Pg.	ENGINEERS - PLANNERS - SURVEYORS	
Drawn	M. DIERA	
Checked	B. BROWN	
Approved	<i>[Signature]</i>	