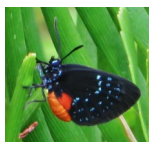




Coontie
Zamia pumila



Gray Hairstreak

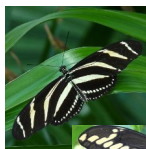
Host for:
Atala



Nectar for: Hairstreaks



Firebush
Hamelia patens



Zebra Longwing



Giant Swallowtail

Nectar for: Julia, Cloudless Sulphur



Saw Palmetto
Serenoa repens



Bartram's Scrub

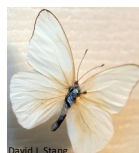
Host for:
Palmetto Skipper



Nectar for: Hairstreak, Monk Skipper, Atala

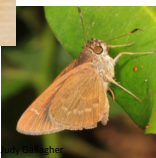


Coreopsis
Leavenworth's Tickseed
Coreopsis leavenworthii



Florida White

Three Spotted Skipper



Nectar for: Monarch, Skippers, Whites

Benefits of a Native Garden

Gardening with native plants benefits both wildlife and the environment. Native plants:

- ◆ provide food and shelter for butterflies, birds, small mammals and other wildlife.
- ◆ require less water because they are adapted to the local environment.
- ◆ require less maintenance and pesticides.
- ◆ improve the beauty of the garden.

Host vs. Nectar Plants



Host Plants provide food and shelter for caterpillars.



Nectar plants provide food for adult butterflies.

Plant both to ensure a complete habitat for butterflies and to observe their amazing life cycle.

Native Plant Nurseries

Local Nurseries:

- ◆ Indian Trails Native Nursery
- ◆ Meadow Beauty
- ◆ Native Choice

For more native plant nurseries:

- ◆ Plant Real Florida
- ◆ Florida Association of Native Nurseries
- ◆ Florida Wildflower Foundation

Questions? E-mail Nandi at NMBoliek@wpb.org



WEST PALM BEACH

GRASSY WATERS PRESERVE

Butterfly Garden Guide



8264 Northlake Blvd, West Palm Beach, FL 33412
Phone: 561-804-4985 Web: www.wpb.org/grassywaters

Native Plants & the Butterflies they Support



Wild Coffee
Psychotria nervosa



Julia

Ruddy Daggerwing



Nectar for: Zebra Heliconian, Atala, Gulf Fritillary, Great Southern White



Partridge Pea
Chamaecrista



Sleepy Orange



Host for: Cloudless Sulphur

Host for: Little Yellow, Gray Hairstreak

Nectar for: Ceraunus Blue



Wild Petunia
Ruellia caroliniensis

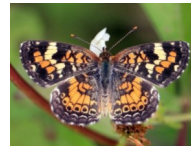


Common Buckeye

White Peacock

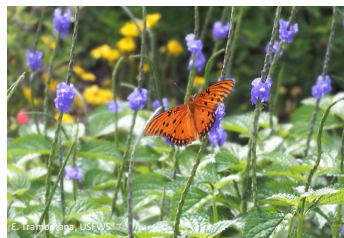


Fogfruit / Turkey Tangle
Phyla nodiflora



Host for: Phaon Crescent

Host for: White Peacock



Blue Porterweed
Stachytarpheta jamaicensis



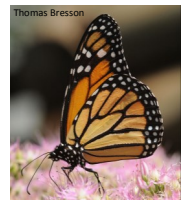
Orange-Barred Sulphur

Host for: Buckeye

Nectar for: Gulf Fritillary, Skippers, Sulphurs, Julia, Monarch



Blue Mistflower
Conoclinium coelestinum



Monarch

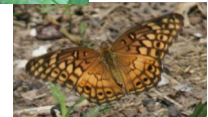
Nectar for: Queen



Corkstem Passion Vine
Passiflora suberosa



Gulf Fritillary



Variegated Fritillary

Host for: Zebra Longwing

Nectar for: Gray Hairstreak, Julia, Cloudless Sulphur



Milkweed
Asclepias tuberosa



Red Banded Hairstreak

Host for: Queen

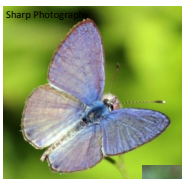


Host for: Monarch

Nectar for: Variegated Fritillary, Gray Hairstreak



Buttongsage
Lantana involucrate



Cassius Blue

Long-tailed Skipper



Nectar for: Skippers, Sulphurs, Florida Duskywings, Atala



Beggarticks
Bidens alba



Dogface

Great Purple Hairstreak



Nectar for: Red Banded Hairstreak, Gray Hairstreak



Live Oak Tree
Quercus virginiana



Host for: Horace's Duskywing

Host for: Pink Striped Oakworm Moth



Host for: Red Banded Hairstreak, White M Hairstreak