

## Where does my water come from?

West Palm Beach receives their water from Lake Mangonia and Clear Lake. Those water bodies are fed by Grassy Waters Preserve which mainly acquires its freshwater through rainfall. The City's Water Treatment Plant pumps water from the lakes and then treats and disinfects it before it gets distributed through water mains.

## Have any lead service lines been found?

WPB Public Utilities has not found any lead service lines thus far. Our research, records, and analysis suggests it is highly unlikely there are any lead service lines within the City's water service area.



## Contact Us

City of West Palm Beach  
Department of Public Utilities  
(561) 822-1300  
Monday through Friday  
8:00 AM to 5:00 PM

City of West Palm Beach  
401 Clematis Street  
(561) 822-2222  
Monday through Friday  
8:00 AM to 5:00 PM  
(<https://www.wpb.org/home>)

Stay connected with West Palm Beach!



Email: [fieldcustomerservice@wpb.org](mailto:fieldcustomerservice@wpb.org)



WEST PALM BEACH

WATER  
SERVICE  
LINE  
INVENTORY

## How does lead enter drinking water?

When water leaves the treatment plant and travels through underground public water mains, it does not contain lead. Before 1989, lead service lines (which connect your house to the water main) may have been installed in West Palm Beach. Lead can also be introduced to your drinking water through lead solder, leaded-brass fixtures, lead goosenecks, and galvanized iron pipes.

## What is a water service line inventory?

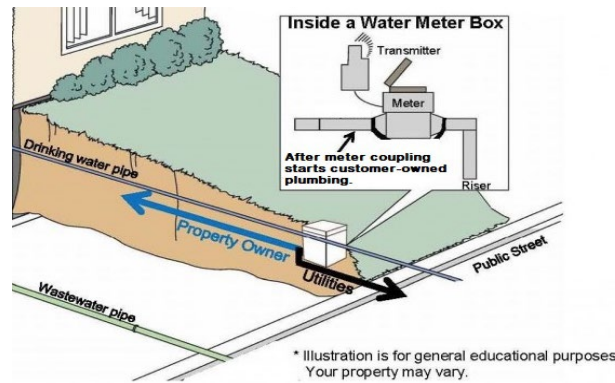
A water service line inventory is a collection of data about a Utility's water services. In particular, it shows pipe material type and/or classification (lead/non-lead/etc.) for each service address in a searchable format.

## Where can I see the inventory?

Wpb.org/

Or use this QR Code with your phone camera:

## What is a water service line?



Service lines are pipes that transport water from the public water main into homes. Water mains are typically in the street while the water meter is near the property line. A customer's plumbing starts after the water meter and is the portion of the service line they maintain.

## How to reduce lead in your drinking water

The best way to remove lead from your drinking water is to remove all sources of lead. Lead filters can also remove lead from your tap water. Running the faucet prior to consumption and using cold water for cooking and drinking can reduce lead concentration. Aerators should be cleaned monthly. Boiling water does not decrease lead concentration.

## Service line materials

### Lead



A dull, silver-gray color that is easily scratched with a coin. Use a magnet - strong magnets will not cling to lead pipes.

### Galvanized



A dull, silver-gray color. Use a magnet - strong magnets will typically cling to galvanized pipes.

### Copper



The color of a copper penny.

### Plastic



White, rigid pipe that is joined to water supply piping with a clamp.

## How to identify a lead service line

To find out if you have a lead service line, you can visit the City's service line inventory at (webpage). Additionally, you can attempt to identify your service line pipe by using a key, screwdriver, or coin to scratch it. If it is lead, it will scratch easily revealing a bright silver color.

## What is lead and lead exposure?

Lead is a naturally occurring mineral found in small amounts in Earth's crust. When consumed in high levels, it can be toxic to humans and animals. There is no safe exposure to lead. Fetuses, newborns, children under 6 and pregnant or breast-feeding mothers are most vulnerable to the harmful effects of lead poisoning.

For more information on lead exposure, visit the U.S. Environmental Protection Agency's website at (<https://www.epa.gov/lead>).